

# Day 2

## Ecological and Sustainable Project Management in Erasmus+



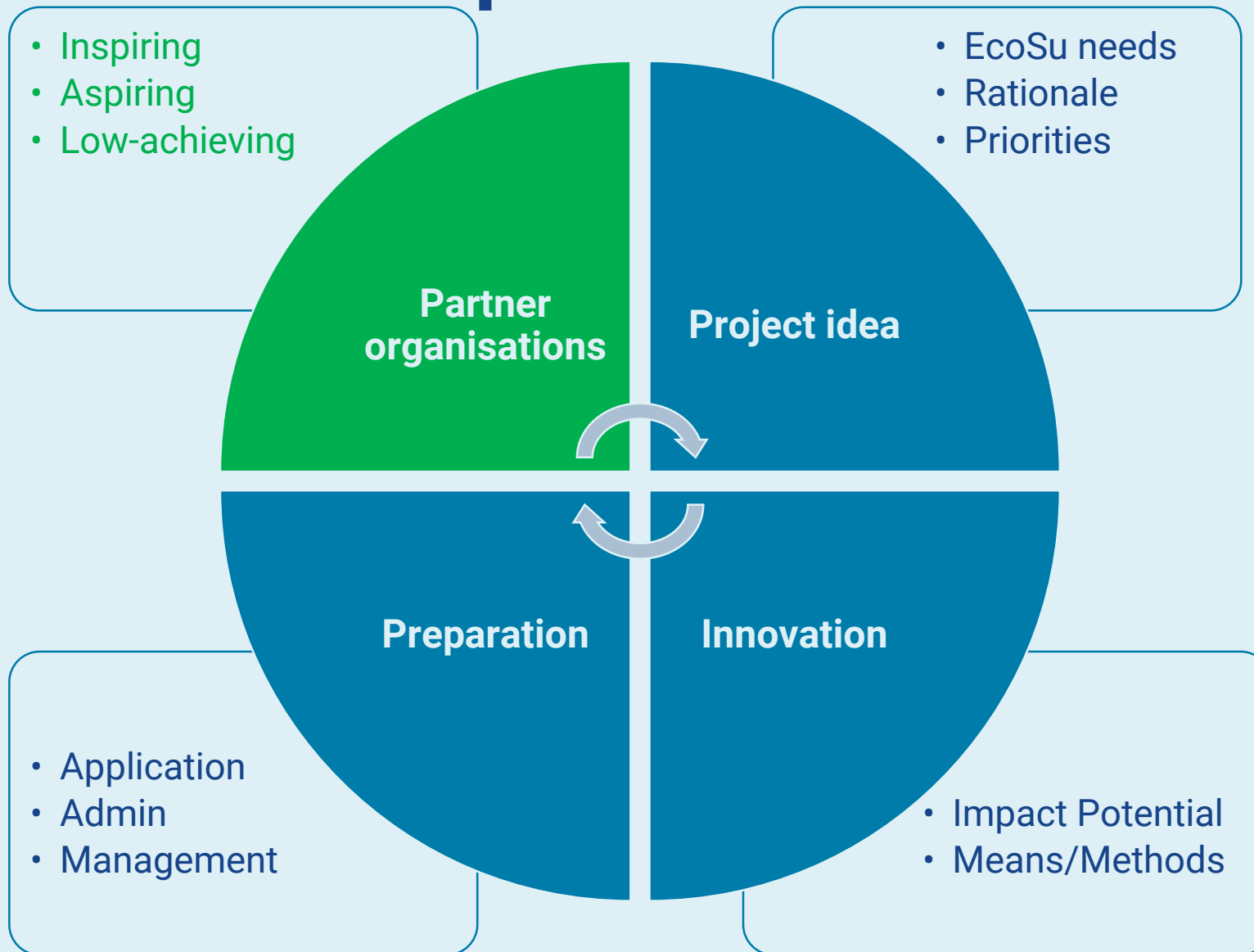


# Planning and project preparation





# Where to look for improved EcoSu?





# Partner organisations in terms of EcoSu

Profile



Strengths



Potential



Synergy





Join at [menti.com](https://menti.com) | use code **7977 8771**



# Do you think of environmental criteria when you form an Erasmus+ partnership?



Never

When selecting partners

When describing partners' existing practice

When describing partners' needs

When identifying opportunities for mutual learning

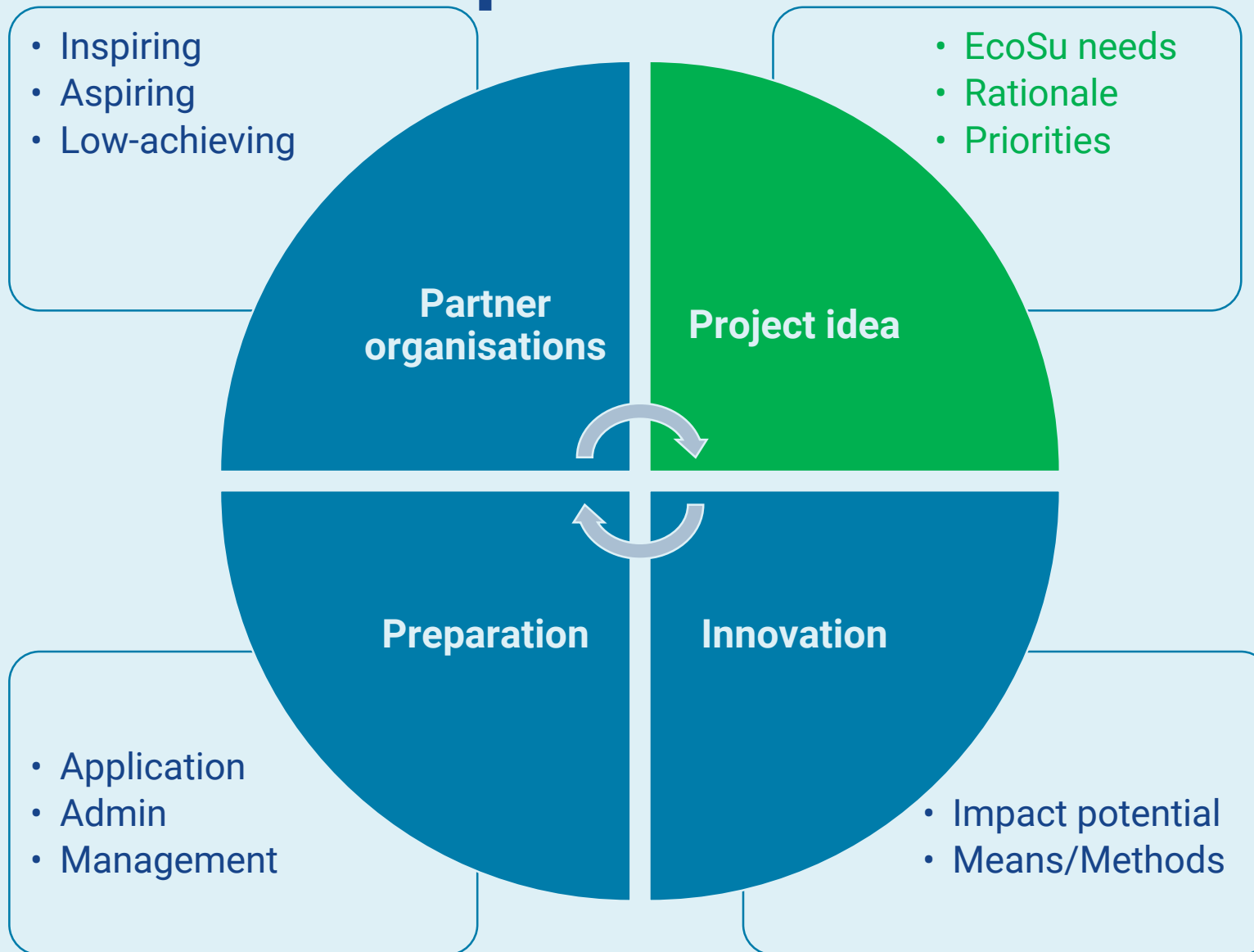
Always

Responses are hidden

Press **H** to show responses



# Where to look for improved EcoSu?





# Project Idea: is it EcoSu?



Based on reliable data!



Join at [menti.com](https://menti.com) | use code **7977 8771**



# How ecologically sustainable is your project idea?



Not really

Is Ecological Sustainability the main goal?

Do you prioritise more ecologically sustainable implementation methods and outputs?

As much as possible

Responses are hidden

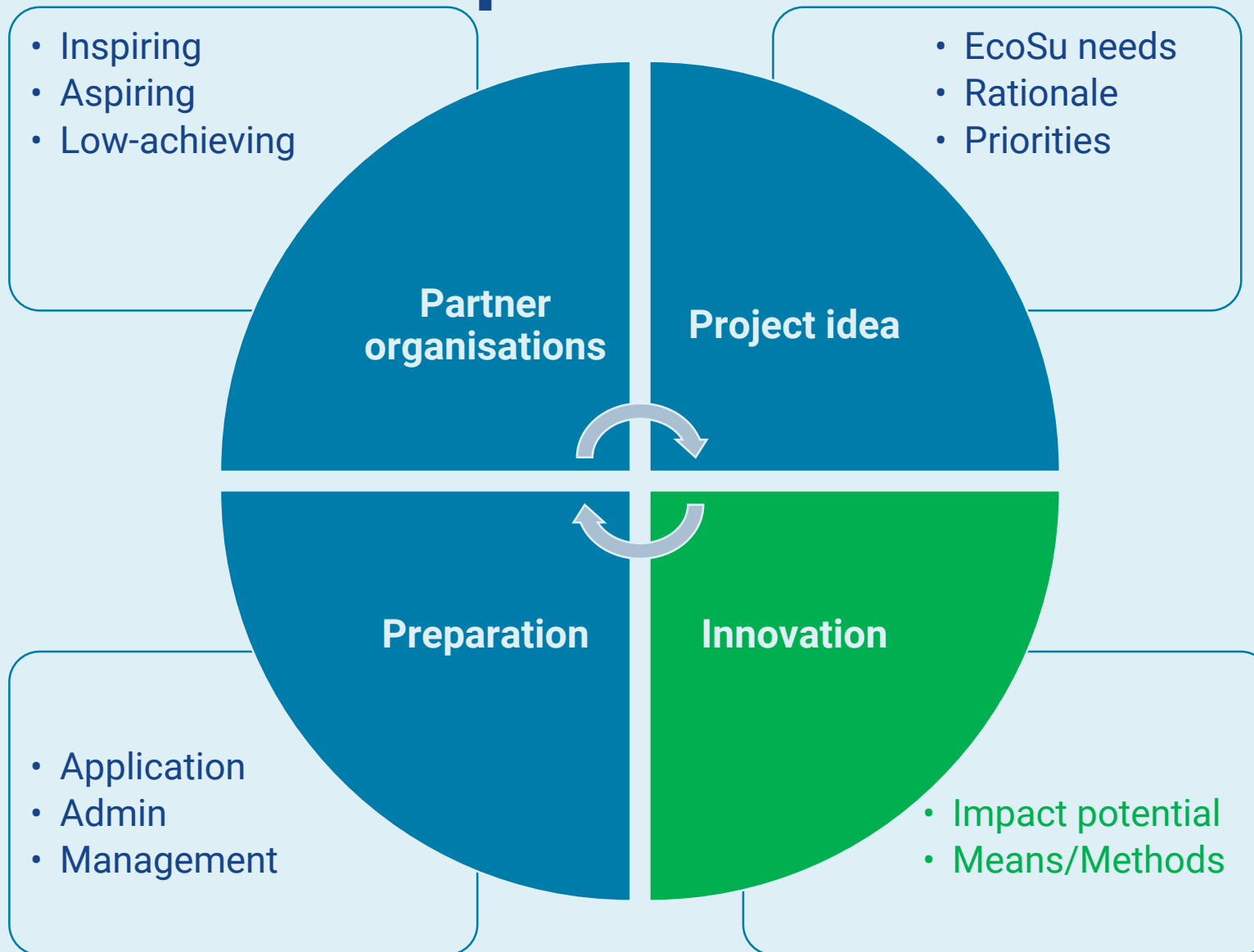
Press **H** to show responses







# Where to look for improved EcoSu?



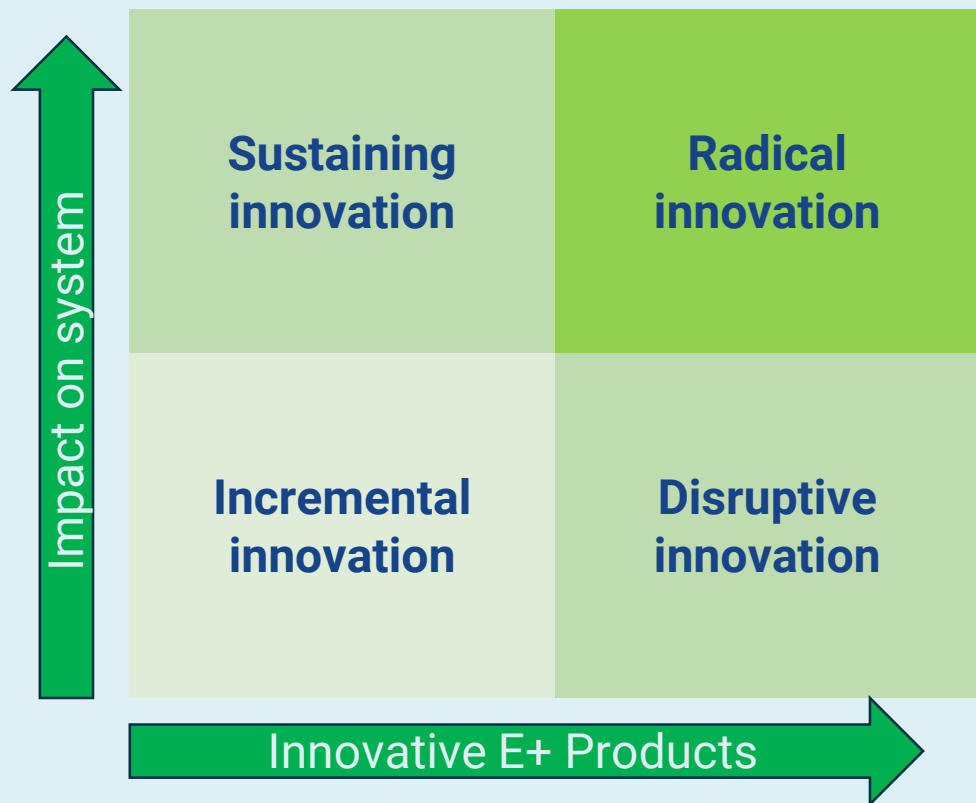


# How innovative is your project?





# How innovative is your project?



## Incremental innovation

Doing the same things better

Reduces negative impact

Operational optimisation

## Sustaining innovation

Small improvements to existing strategies

Follow-up on actions already in place

Sustaining previous improvements

## Disruptive innovation

Doing good by doing new things

Creates shared values

Organisational transformation

## Radical innovation

Doing good by doing new things with others

Creates new positive impact

Drives systemic / societal change



# Is there a correlation between innovation and level of impact in the different actions of Erasmus+?

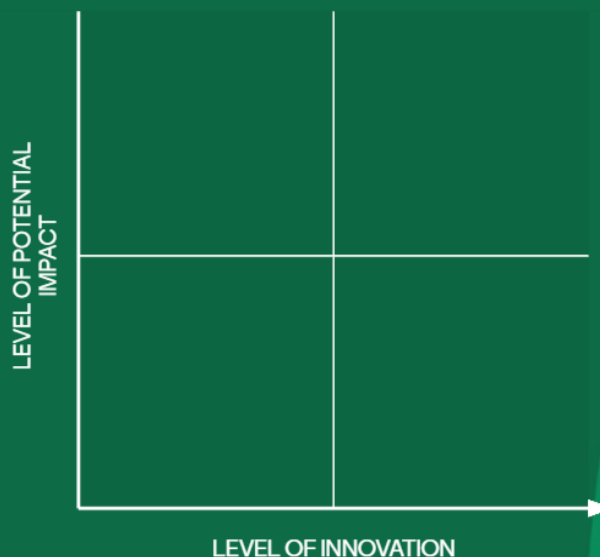




Join at [menti.com](https://menti.com) | use code **7977 8771**

# Situate different Erasmus+ actions by estimating their likely levels of innovation and potential for impact.

Assign to each project the expected level of innovation and impact.



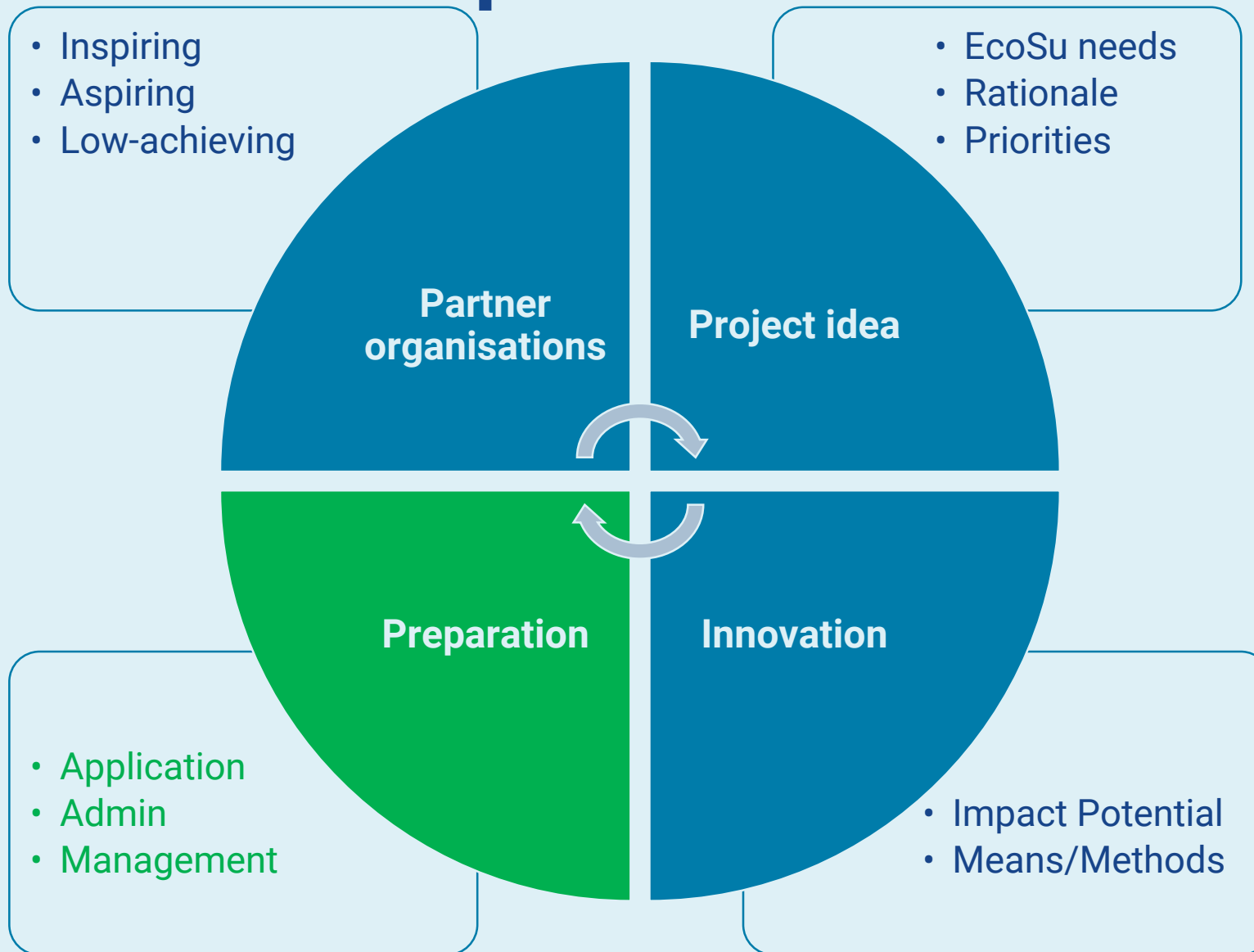
- 1 KA 1 mobilities between two schools exploring regional cuisine
- 2 KA2 Cooperation partnership creating an AI tool for simultaneous lesson creation in several languages

Responses are hidden

Press **H** to show responses



# Where to look for improved EcoSu?



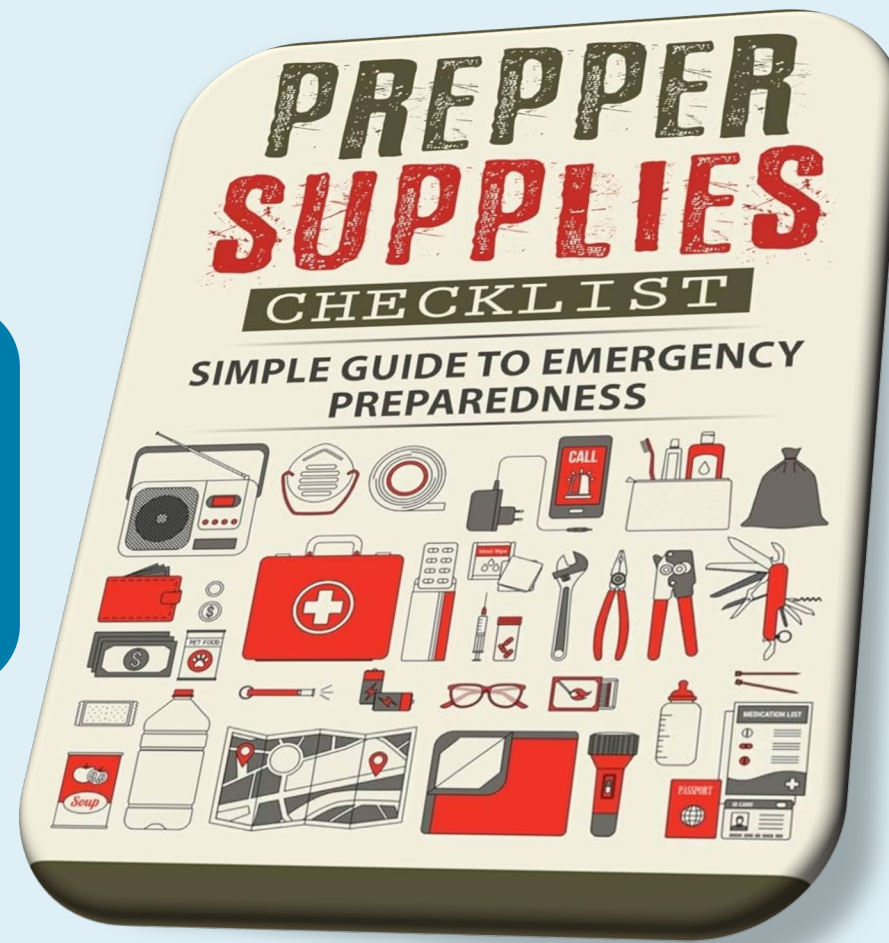


# Are you an Erasmus+ Prepper?

Pre-project  
(Application)  
Stage

Administrative  
Arrangements

Management  
System

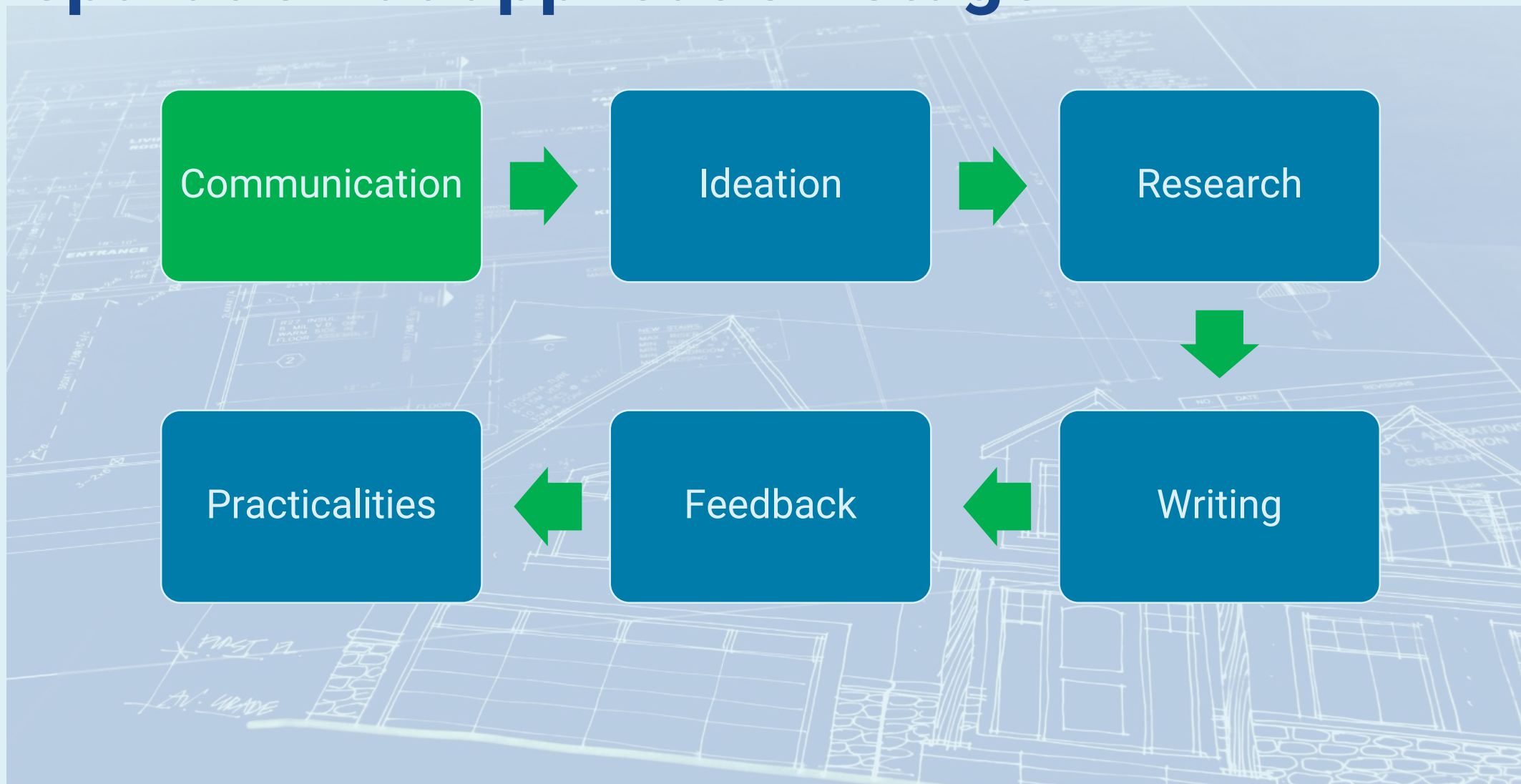






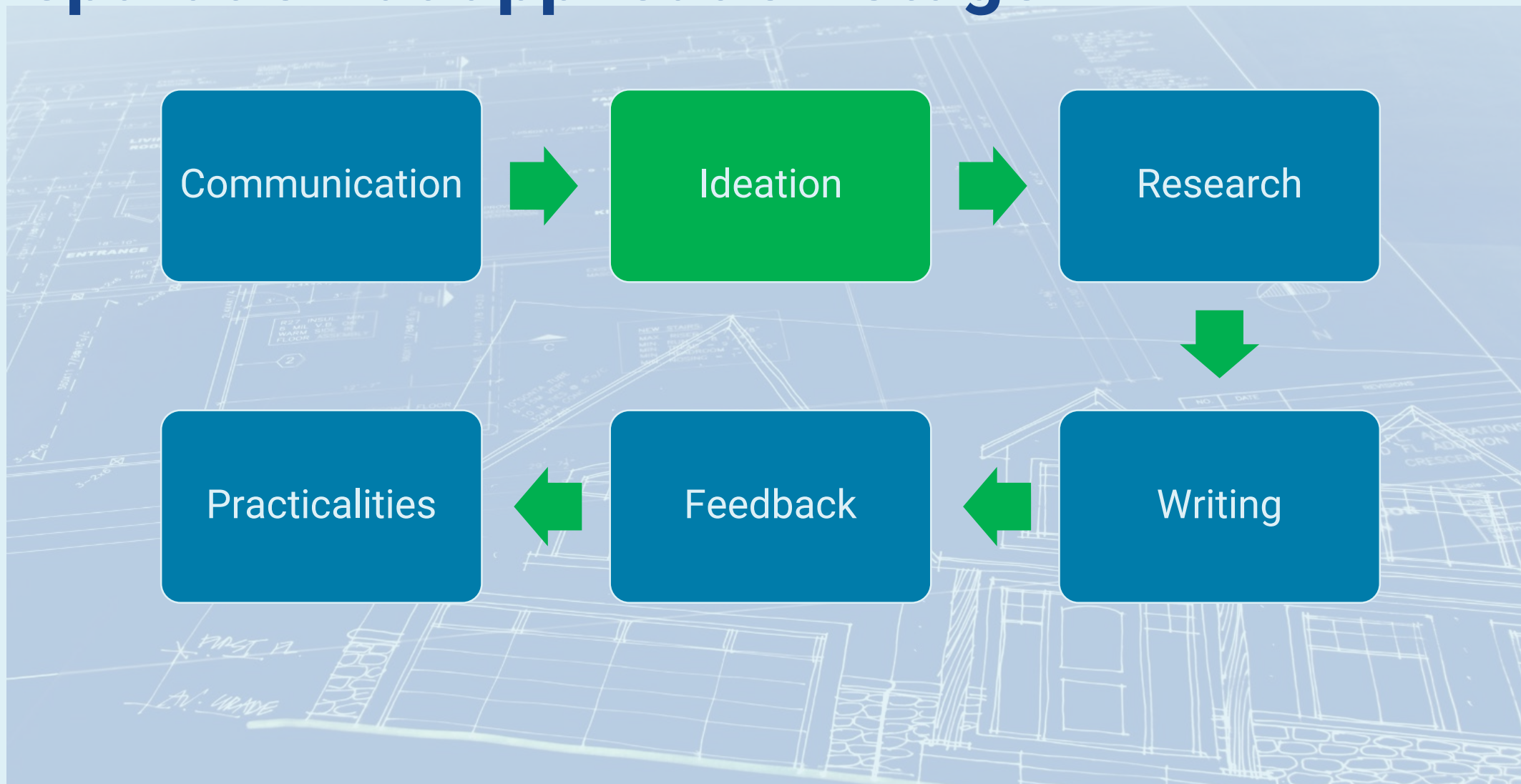


# Preparation at application stage



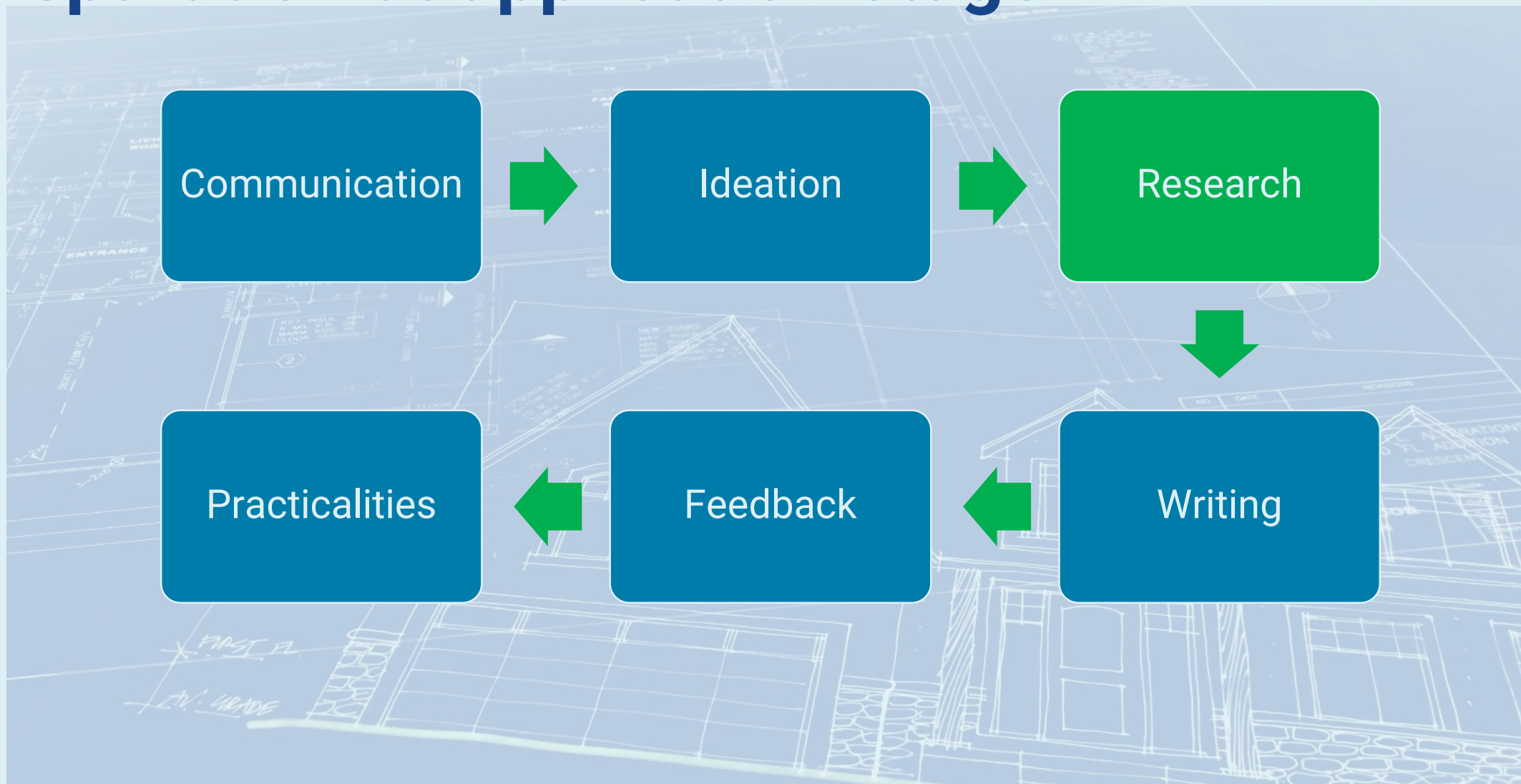


# Preparation at application stage



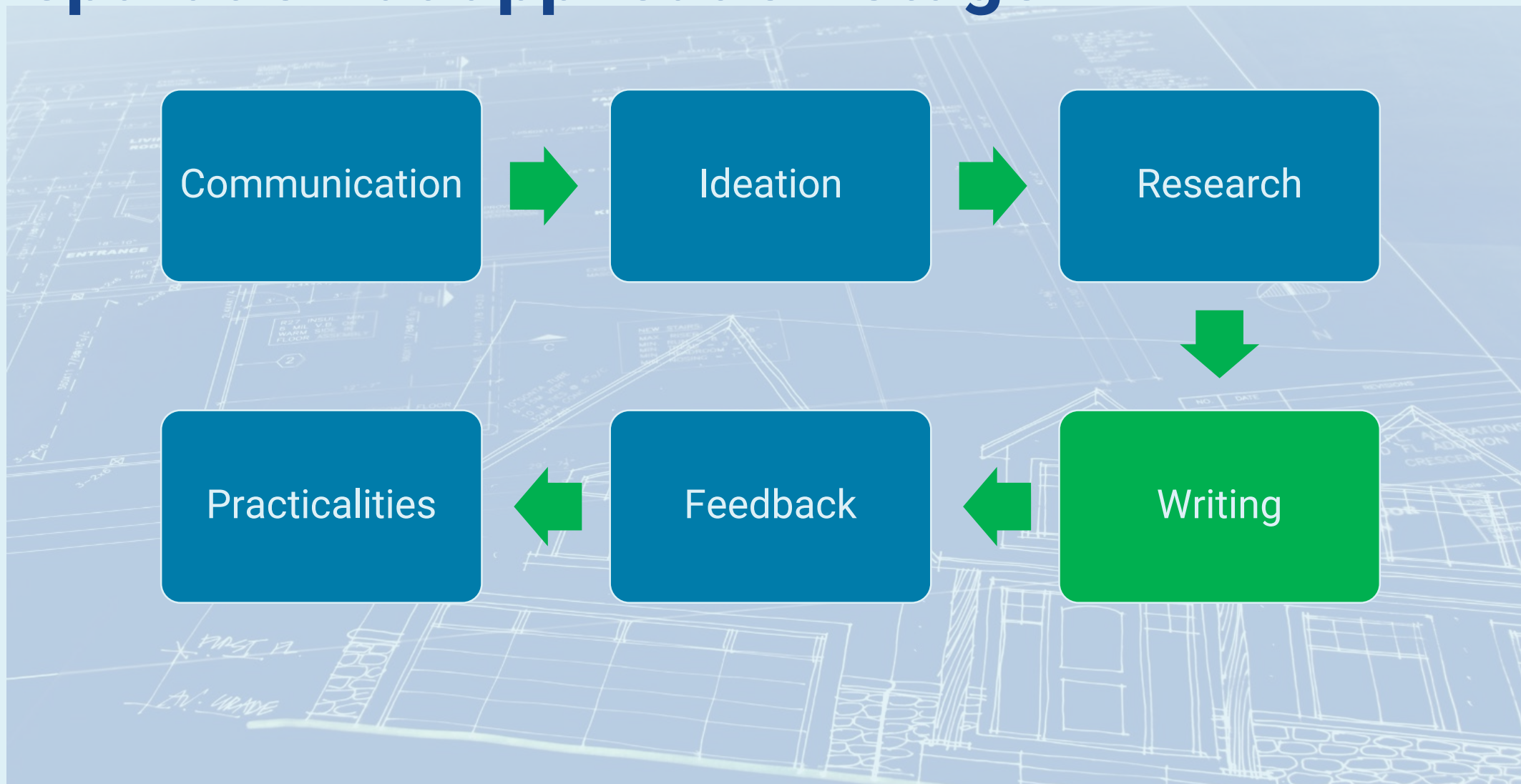


# Preparation at application stage



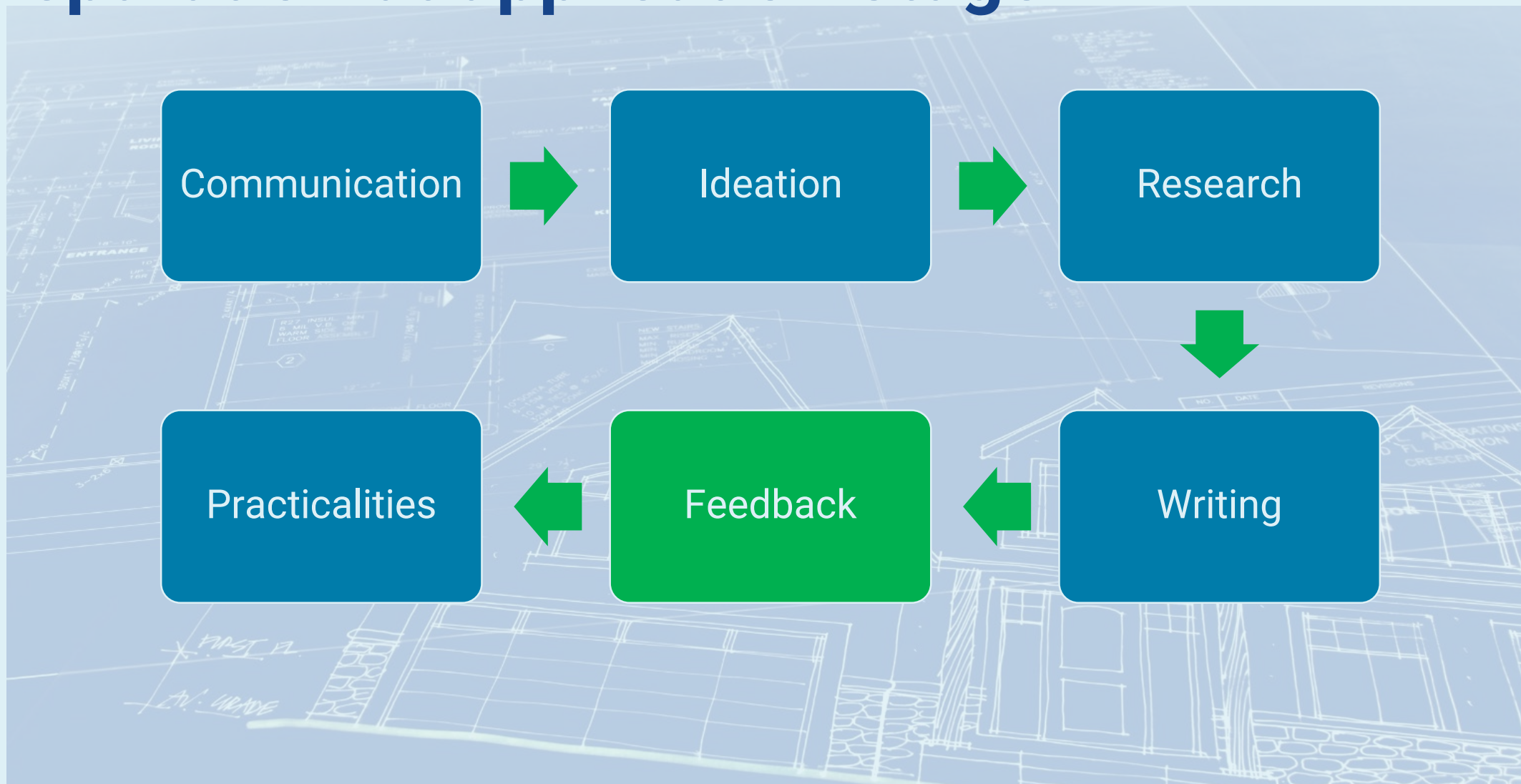


# Preparation at application stage



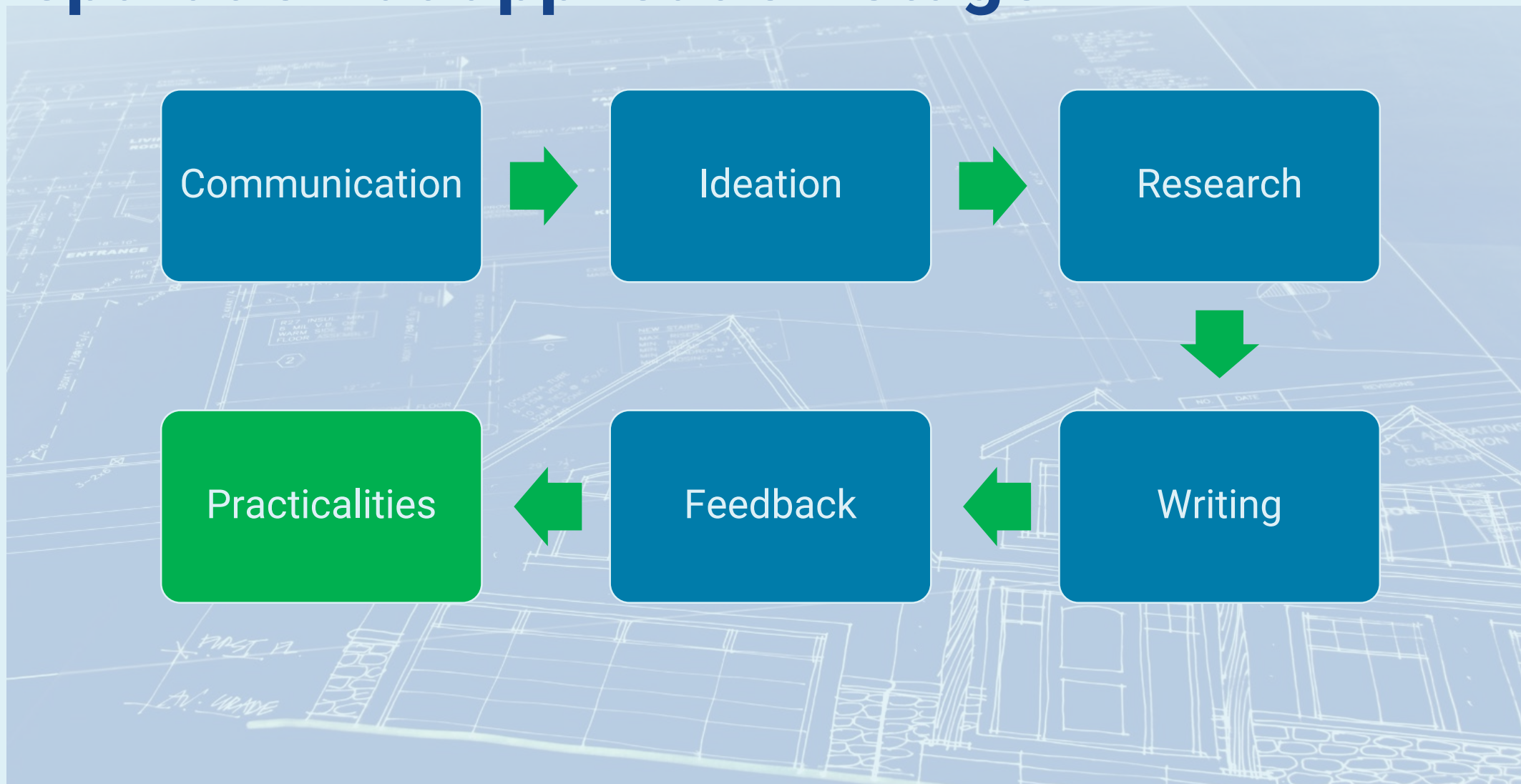


# Preparation at application stage





# Preparation at application stage



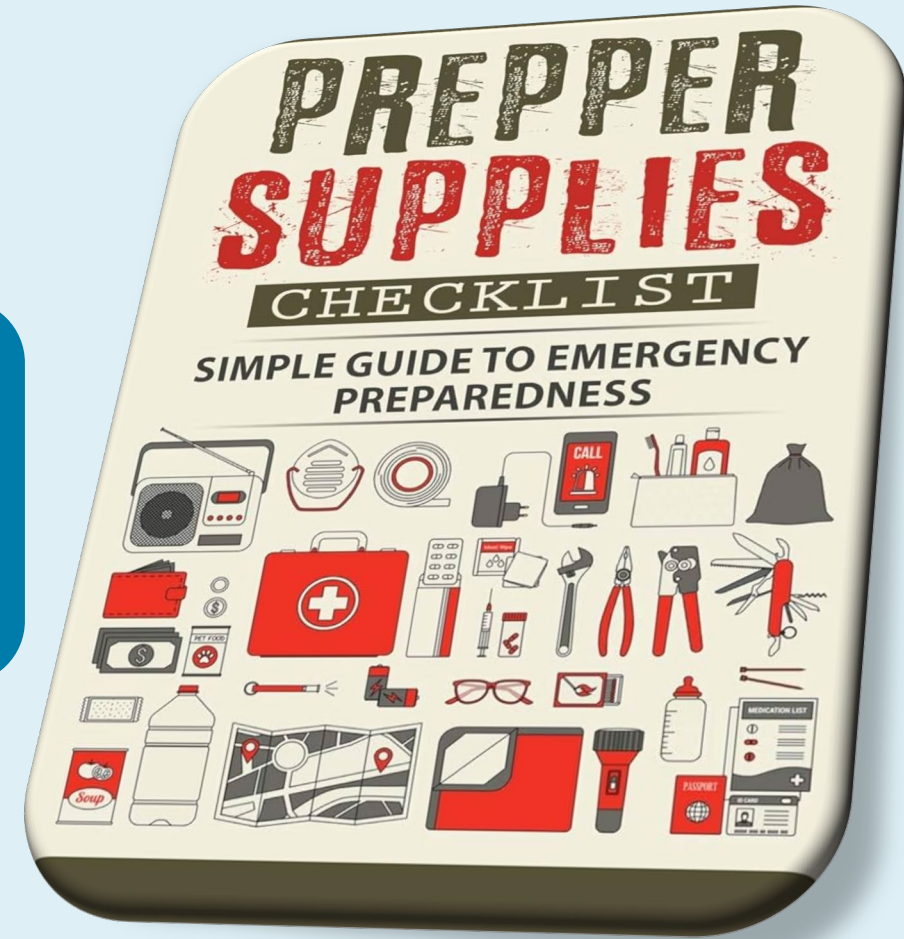


# Are you an Erasmus+ Prepper?

Pre-project  
(Application)  
Stage

Administrative  
Arrangements

Management  
System





# Administrative arrangements

Partnership  
agreements

Staff contracts

Charter of  
cooperation with  
associated partners

Volunteering  
agreements





# Administrative arrangements

Partnership  
agreements



Staff contracts



Charter of  
cooperation with  
associated partners



Volunteering  
agreements



# Administrative arrangements

Partnership  
agreements



Staff contracts



Charter of  
cooperation with  
associated partners



Volunteering  
agreements



# Are you an Erasmus+ Prepper?

Pre-project  
(Application)  
Stage

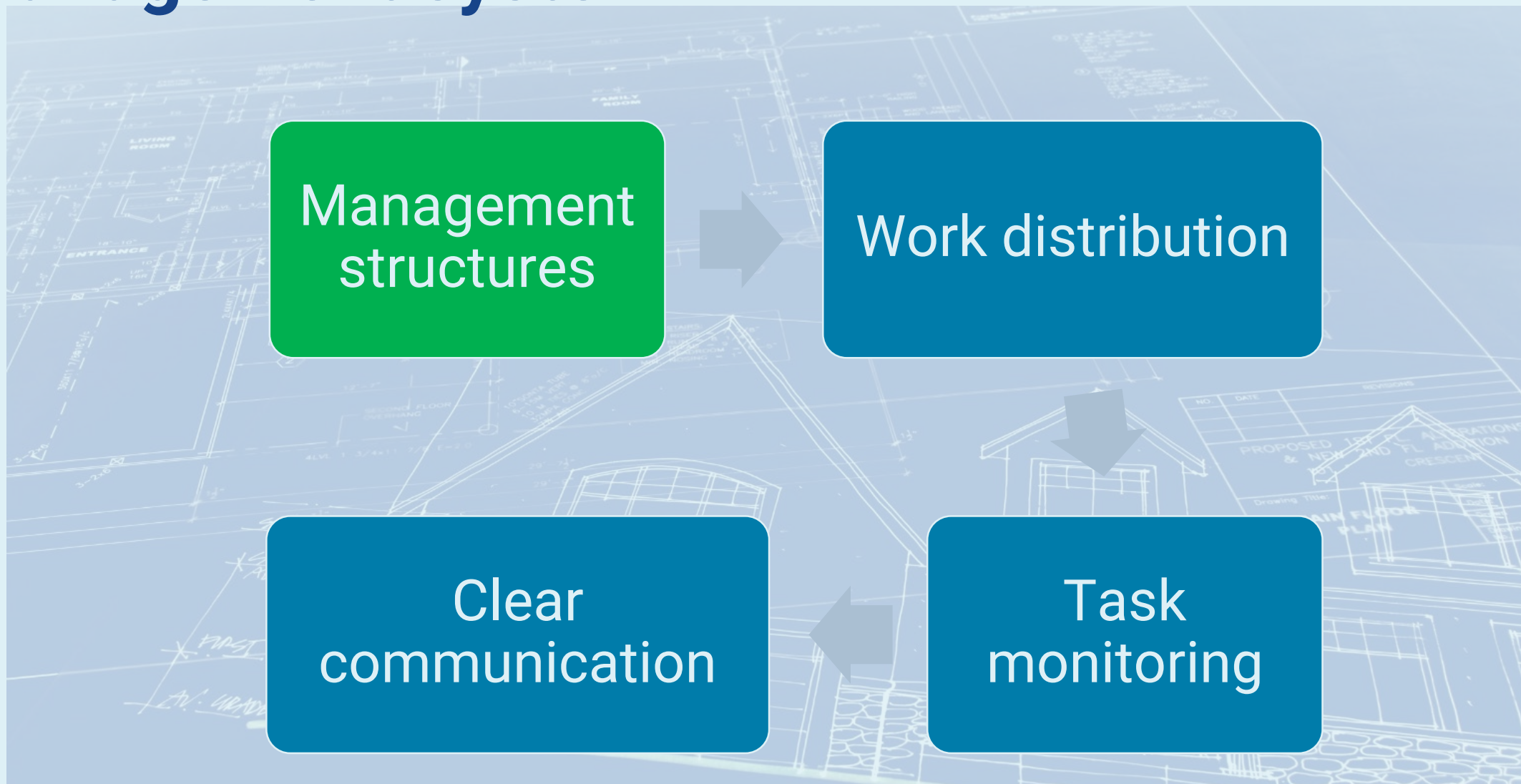
Administrative  
Arrangements

Management  
System



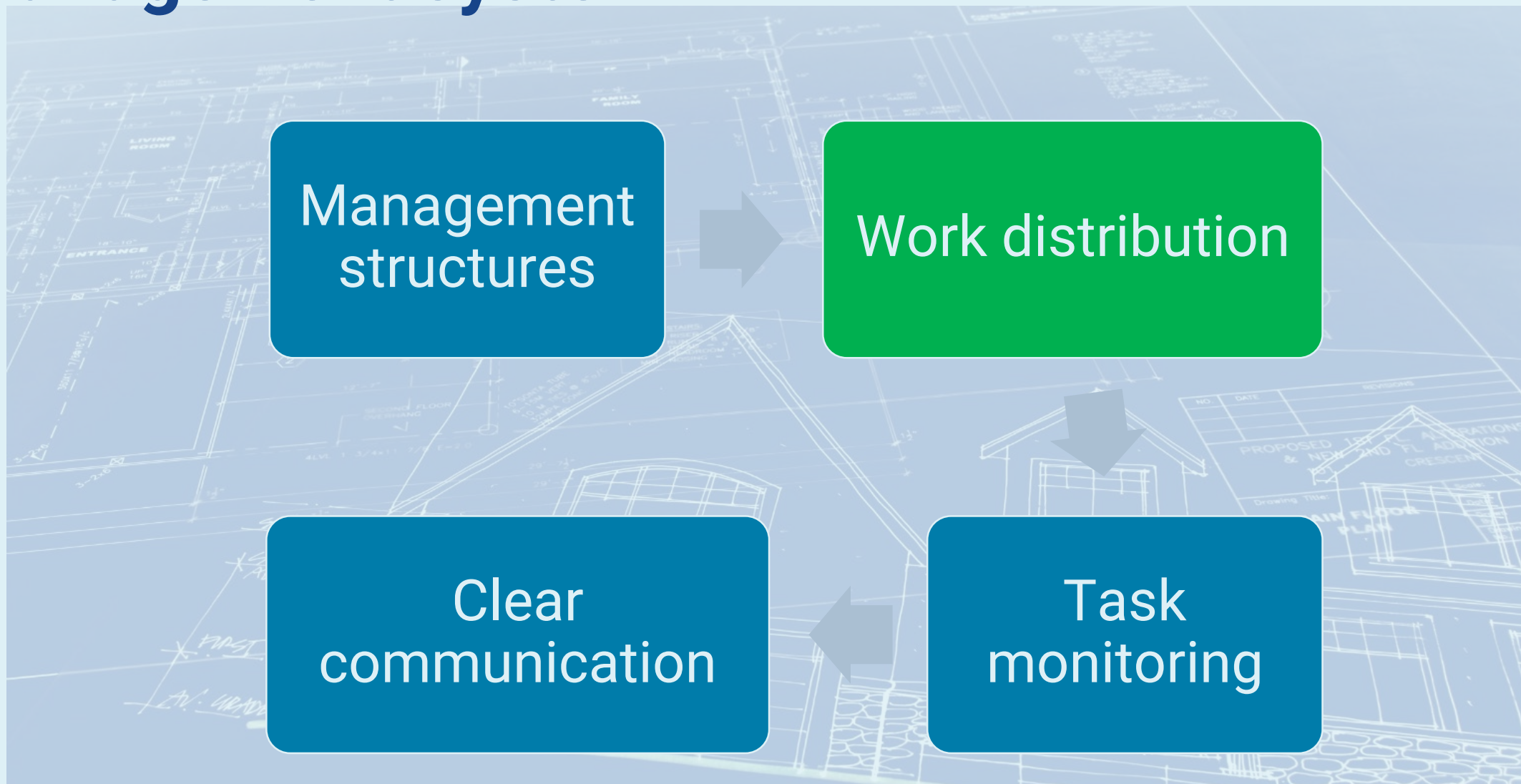


# Management system



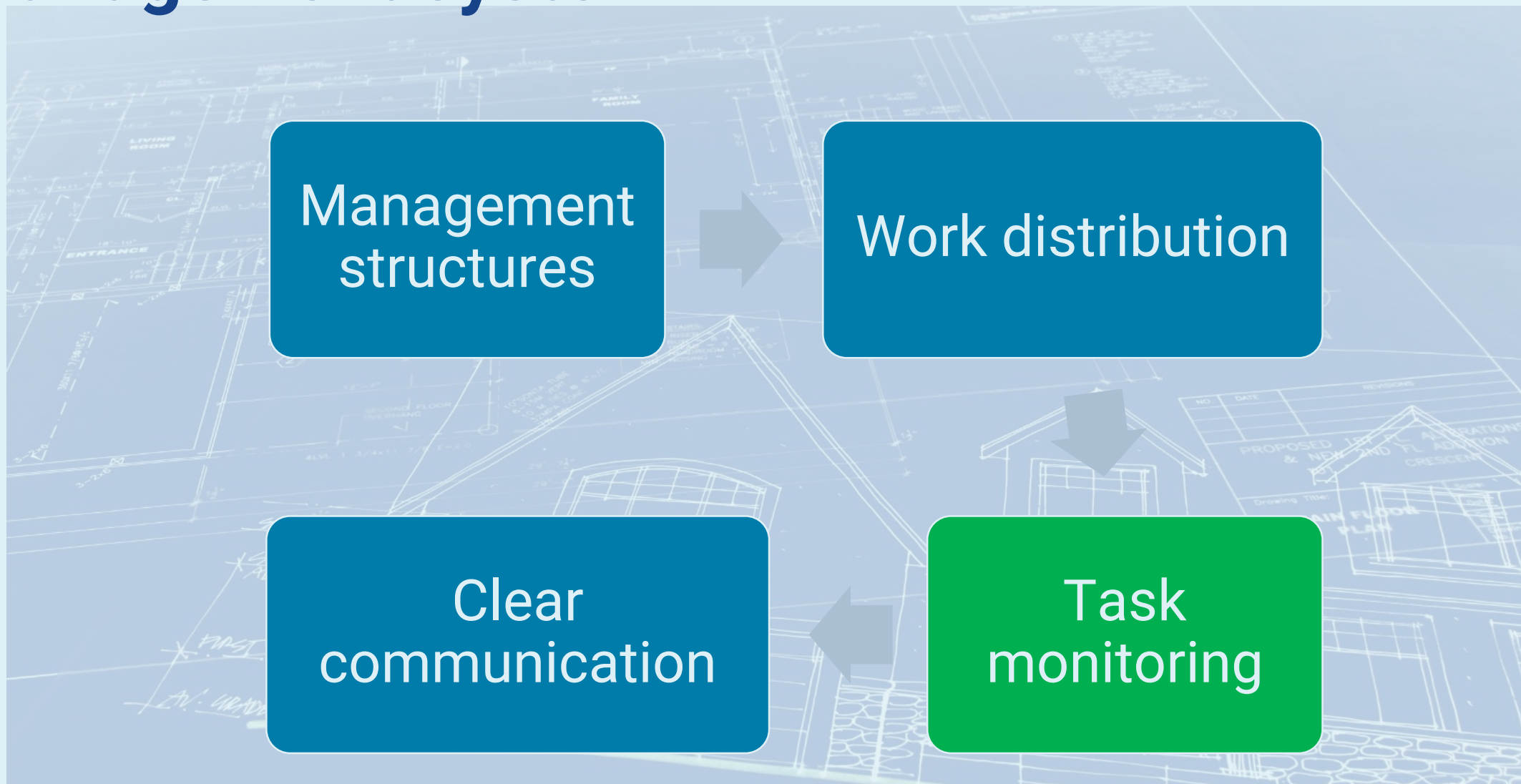


# Management system



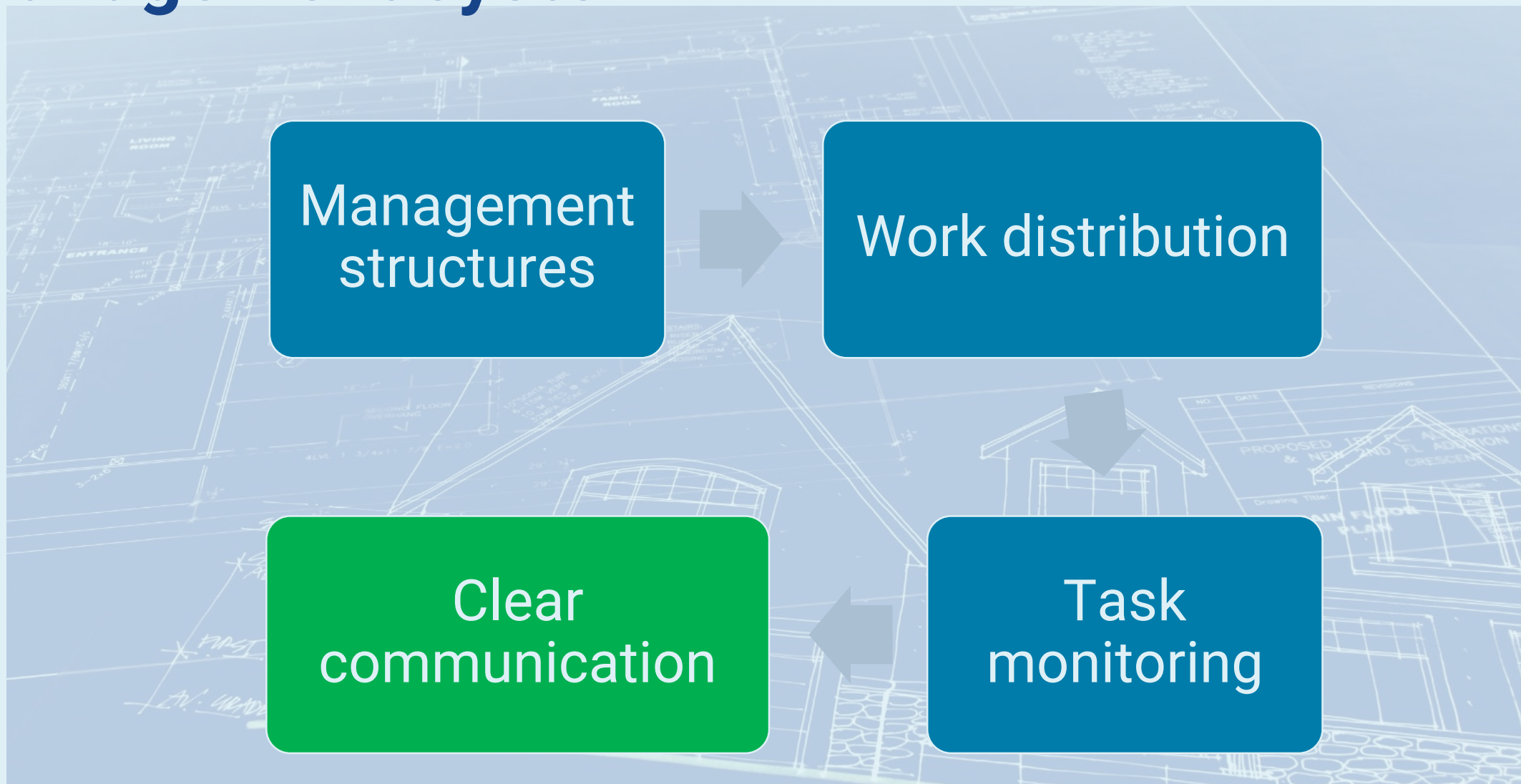


# Management system





# Management system

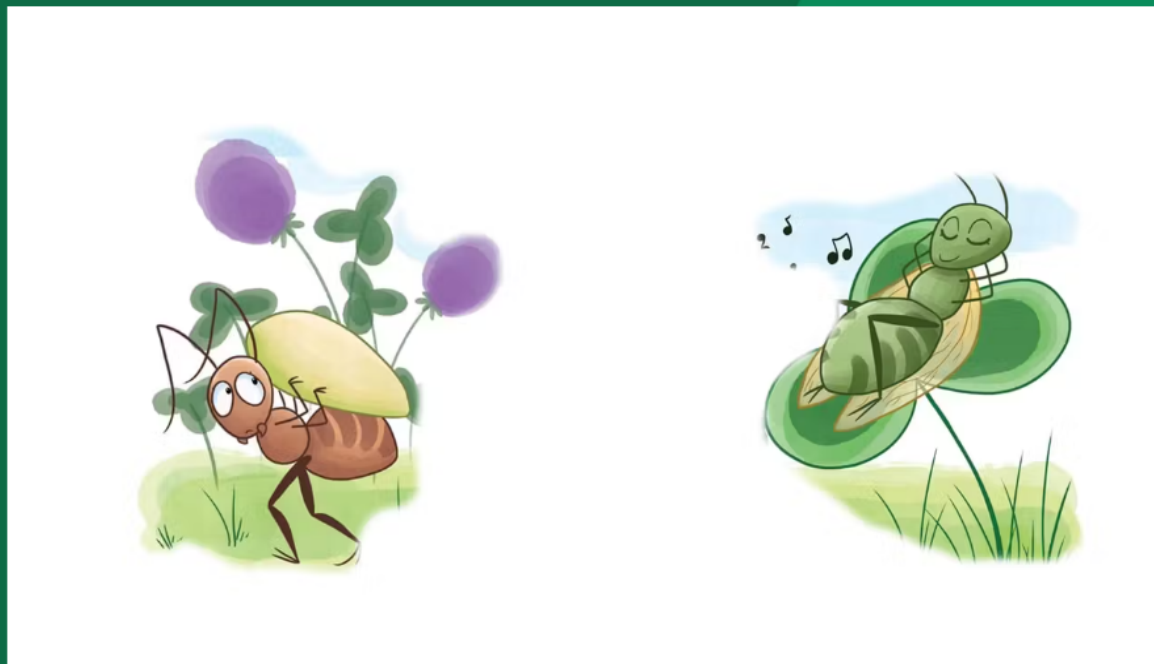




Join at [menti.com](https://menti.com) | use code 7977 8771

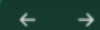


# In the story of "The Ant and the Cicada", which one are you? .....really.



Responses are hidden

Press **H** to show responses







# Group work 1

1. (10 min) Introduction to tools and relevant documents that can support the participants
2. (30 min) Each group works on one of the topics and presents a mind map of anything that can be covered by the topic
3. (20 min) The results are presented and then pinned to the wall



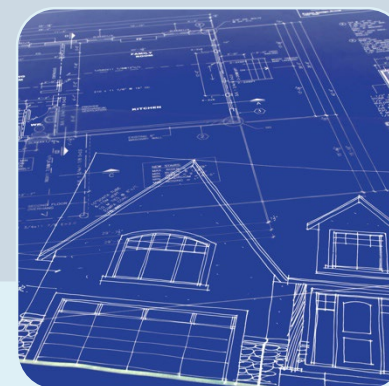
Organisations



Project Idea



Innovation



Preparation



# Some help...



**... and more!**



# www.ThinkTwice.management



[about](#) [treasury](#) [stress test](#) [partners](#) [material](#) [news](#) [contact us](#)  

Stress Test of current practice leading to a personalised Learning Pathway





# Group work 1 results – MIND MAPS



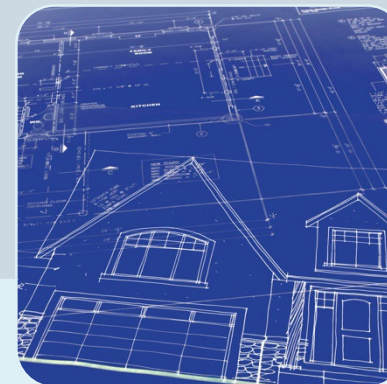
Organisations



Project Idea



Innovation



Preparation



# Group work 2

1. (60 min) Using the outputs of Group Work 1, each group will generate an idea to work on and populate the four application sections taking into account the idea, the participating organisations and the chosen project format (KA1, KA210, KA 220...)
2. (30 min) The results are presented, highlighting the most interesting EcoSu elements
3. (30 min) Group discussion of challenges and identified solutions



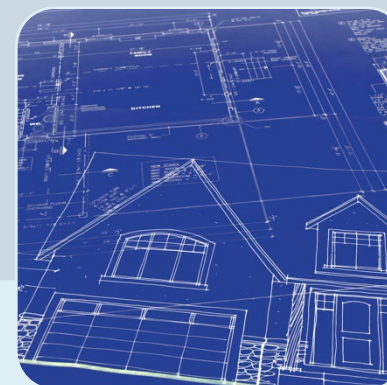
Organisations



Project Idea



Innovation



Preparation



# Group work 2 results – EcoSu project ideas



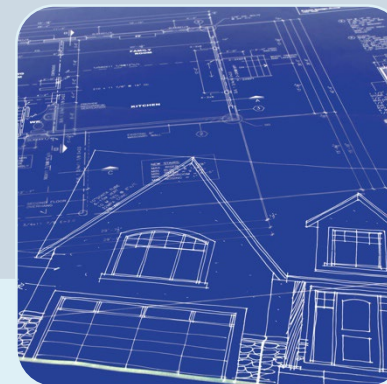
Organisations



Project Idea



Innovation



Preparation



Join at [menti.com](https://menti.com) | use code **7977 8771**



**Which challenges encountered during the exercise would you like to discuss?**

0 responses

